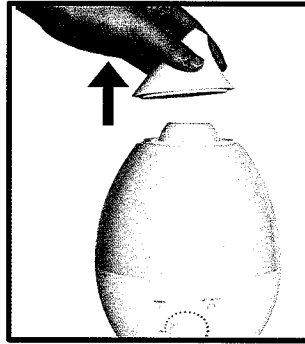
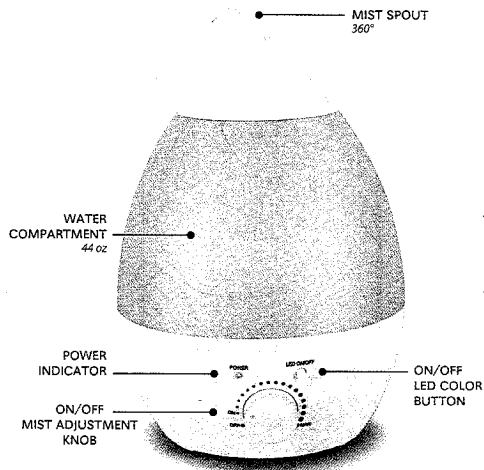
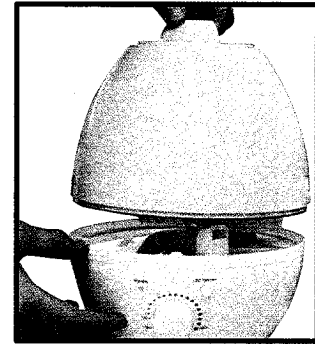


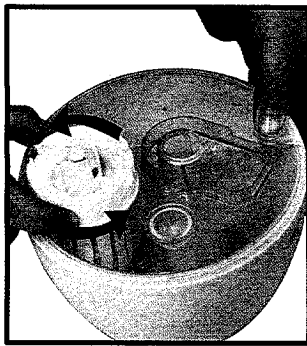
# INSTRUCTIONS



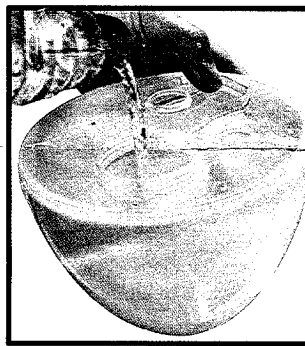
1. Remove mist outlet cover.



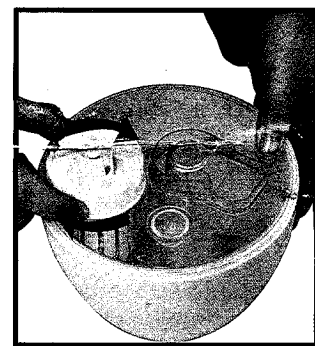
2. Detach the water compartment from the base by holding from the top.



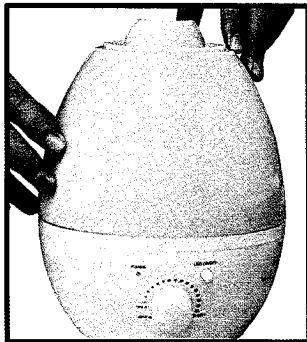
3. Turn the tank upside down. Unscrew the tank cover/filter.



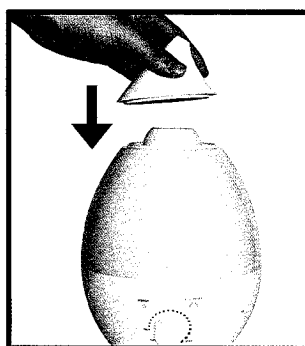
4. Pour room temperature water into the compartment.



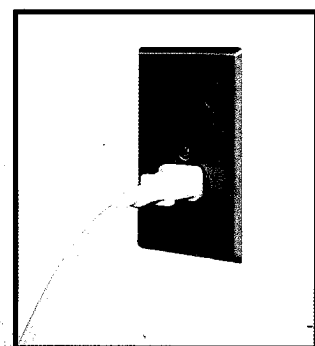
5. Screw the cover/filter security back in place.



6. Place water compartment back on the base with proper alignment.

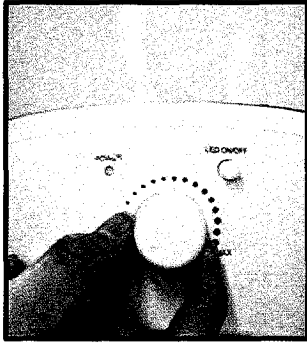


7. Place mist outlet on top.

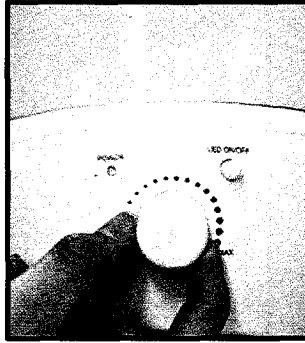


8. Plug to power outlet.

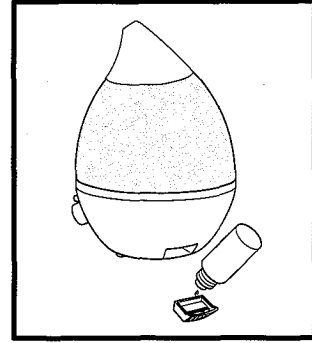
# INSTRUCTIONS



9. Rotate ON/OFF knob to turn the vent on/off.



10. Use the same knob to adjust mist from MIN/MAX.



11. Use tray located in the bottom of the unit for essential oil.

## Note:

Press the "LED ON/OFF" button once for automatic color changing LED lights.  
Press the "LED ON/OFF" button again and it will stay steady in one color.  
To turn LED lights off, press "LED ON/OFF" button repeatedly for 8 times.

## ⚠ CAUTION

- Do not pour water in water compartment while unit is plugged in.
- Clean the unit with damp cloth. Do not submerge into water.
- Place the unit away from heat source or direct sunlight.
- Do not pour essential oil directly into the water compartment. This may damage the unit.
- Keep the product away from children and pets.